



ASAF ATELIER

INTERIOR ARCHITECTURE



asafatelier.com

Asaf Atelier Interior Architecture,

designs that reshape the spirit of interiors, offering a combination of aesthetics and functionality. We are passionate about creating unique designs in every project.

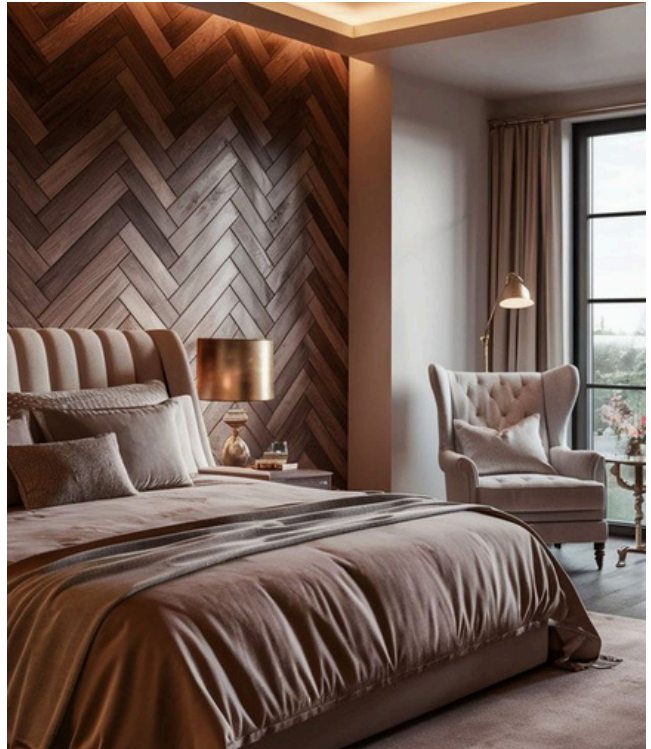
Our design philosophy is to see spaces not only as places to live, but also as stages for inspiring experiences. Our creative team is dedicated to bringing users' dreams to life with projects that are thoughtfully crafted.

If you are looking for a unique and striking change in your living space, you have come to the right place.

VILLA ARCHITECTURAL PRACTICE

In each of our projects, we offer customized solutions by understanding the needs and desires of our clients. Large and spacious interiors, rooms flooded with natural light, carefully selected materials and impeccable workmanship add elegance and warmth to your villas.

By staying in constant communication with our customers throughout the process, we aim to make their dream living spaces a reality. We work meticulously every step of the way, from design to practice and finishing, and offer the highest standards of service.



Villa Architectural Practice

Residential interior design is prepared according to the customer's own requirements and style, including aesthetic and functional design, reflecting individuality and comfort in every detail.

Bedroom Architectural Practice

We design comfortable bedrooms to meet customer demands by offering peaceful and stylish designs for relaxation or the first place we open our eyes.

KITCHEN ARCHITECTURAL PRACTICE

Kitchens are the heart of a home and one of the most used parts of the living space. At Asaf Atelier Interior Architecture, we create unique kitchen designs for every taste and need, combining functionality and aesthetics.



Handy Closet Solutions

Our attention to detail is reflected in everything from the choice of cabinet doors and countertop materials to lighting and storage solutions. In each kitchen design, we create a perfect balance of aesthetics and functionality, creating warm and inviting spaces.



RESTAURANT & CAFE ARCHITECTURAL PRACTICE

Restaurants and cafes are not only places to eat, but also special places for social interactions and unforgettable moments. At Asaf Atelier Interior Architecture, we design each project to make your guests feel special and comfortable.



Our restaurant and cafe designs create a warm and inviting atmosphere by focusing on the comfort of your customers.

We make your spaces unique with functional layouts, quality materials and creative decorative solutions.

From large restaurant projects to small, intimate cafe designs, we make a difference with our innovative and aesthetic solutions.



OFFICE ARCHITECTURAL PRACTICE

Office environments are places that need to be functional and aesthetically perfect in order to increase the productivity and motivation of employees. As Asaf Atelier, we offer innovative solutions in modern office designs and bring ergonomics and elegance together. We combine functionality and aesthetics with customized furniture, acoustic arrangements and lighting solutions suitable for every business environment.



Optimization of Workspaces

To create a productive working environment, it is essential to make the best use of space. The balance between open office layout, common areas that encourage teamwork and individual workspaces is the basis for a design that improves workflow. Asaf Atelier offers flexible and adaptable solutions, taking into account the needs of each user in the planning of workspaces. At the same time, details such as meeting rooms, quiet workspaces and relaxation corners that increase collaboration are also considered.



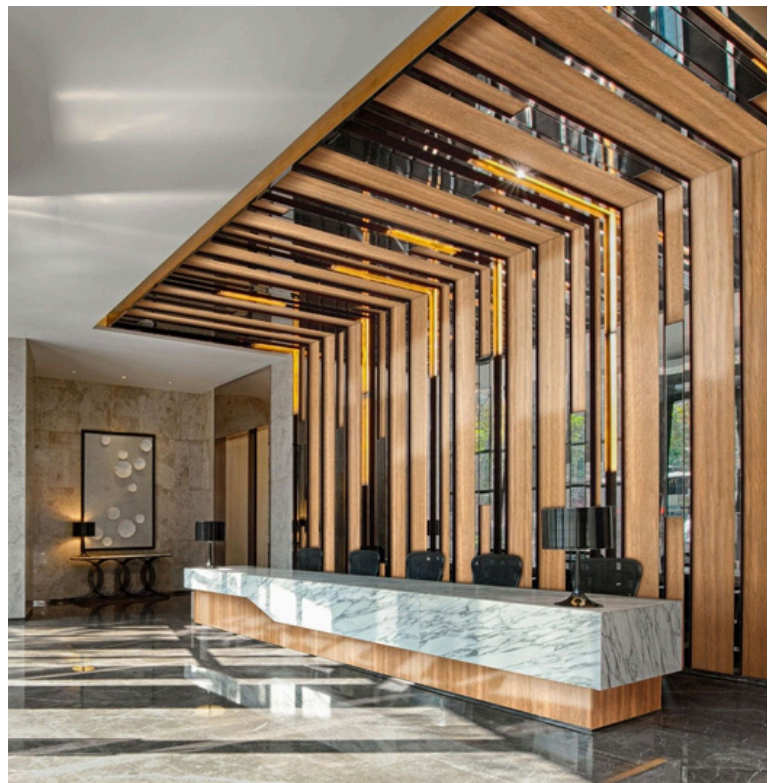
HOTEL ARCHITECTURAL PRACTICE



The comfort and unforgettable experience of the guests is one of the most important elements in hotel design. Asaf Atelier creates unique concepts by prioritizing hospitality and aesthetics in hotel projects. We offer detailed design and implementation services for lobby, rooms, restaurants and common areas, creating spaces that reflect luxury and comfort in every area.

Lobby and Welcome Areas

The lobby is a hotel's first point of contact with guests and an important area that reflects the overall atmosphere of the hotel. Asaf Atelier takes care to create a warm and inviting environment in its lobby designs. We develop lobby designs that strongly emphasize the identity of the hotel with seating areas where guests can relax comfortably, user-friendly layout of reception desks and visually impressive lighting. At the same time, it is ensured that these areas are functional and designed in an order that facilitates the entry-exit processes of the guests and makes them comfortable.



HOSPITAL / CLINIC ARCHITECTURAL PRACTICE



Interior design for healthcare institutions should be in line with the needs of patients and healthcare professionals. Asaf Atelier designs hygienic, relaxing and functional healthcare spaces, creating peaceful spaces that contribute to the treatment process. Every detail, from color selection to material use, is customized according to the requirements of the health sector.



Polyclinic and Examination Rooms

Outpatient clinic and examination rooms should offer both a functional and reassuring environment as they are the areas where the first contact with patients takes place. Asaf Atelier plans every detail, from the color palette used in these rooms to the furniture, lighting and technological equipment, in a way to increase both the comfort of the patients and the working efficiency of the doctors. Placing examination tables, cabinet systems and patient registration areas in an ergonomic order speeds up work processes and increases patient satisfaction.

SPORTS HALL

ARCHITECTURAL PRACTICE



Gyms should offer an energizing, motivating and comfortable environment. Asaf Atelier designs gyms and fitness centers according to the needs of users, making it enjoyable to do sports with wide movement areas and ergonomic arrangements. In addition to sports areas, changing rooms and resting areas are also designed with functionality in mind.



The correct use of space in gyms is of great importance for the freedom of movement of the users. Asaf Atelier takes care to organize the areas suitable for each sports branch in a spacious and functional way in its gym designs.



Areas for different activities such as cardio, weight training, group exercises and stretching are planned with ease of use and safety in mind. In addition, the compartmentalization and layout of the areas ensure that users can move freely even during peak usage hours.

SHOPPING MALL / STORES ARCHITECTURAL PRACTICE

Creating an impressive atmosphere in retail spaces is an element that enriches the shopping experience. Asaf Atelier designs attractive showcases, spacious interiors and functional display areas for shopping centers and stores. By offering solutions that optimize the customer experience, we create spaces that highlight the identity of the brand.



Store Showcase Design

As Asaf Atelier, we offer creative solutions that best reflect the identity and product range of the brand in store windows. We aim to increase the desire of customers to enter the store with remarkable and intriguing showcase designs.

Shopping Mall Common Areas

The overall design of shopping centers directly affects the environment in which the stores are located. Asaf Atelier creates wide transition areas, resting points and spacious atmospheres where visitors can move around easily in shopping center projects. The common areas within the shopping center are planned as comfortable spaces where visitors can relax during shopping breaks.



Shopping malls and stores are commercial spaces that not only offer customers products, but also an experience. The design of these spaces should bring together elements that attract customers, reflect the identity of the brand and at the same time offer a comfortable shopping experience. As Asaf Atelier, we offer customer-oriented, functional and aesthetic solutions in shopping mall and store designs, ensuring that commercial spaces are used with maximum efficiency. Careful planning of in-store navigation routes and careful design of every detail from the showcase to the interior are the basic steps to enrich the customer experience.

FACTORY ARCHITECTURAL PRACTICE

Industrial spaces need a functional design that will increase productivity. Asaf Atelier offers spaces that increase productivity with large working areas, ergonomic arrangements and effective use of materials for factory and production areas. In addition to factory areas, office spaces and social areas are also designed with a functional and aesthetic approach.



Factory design is a critical step that directly affects the efficiency of production processes and the overall performance of the business. Functionality, safety, ergonomics and sustainability are the main criteria to be considered in factory design.

As Asaf Atelier, we offer modern and sustainable factory solutions that optimize production, storage, management and social areas, taking into account the specific needs of each business. Focusing on efficient workflow, energy saving and employee comfort, our designs provide both economic and environmental benefits to businesses.



EDUCATION INSTITUTIONS

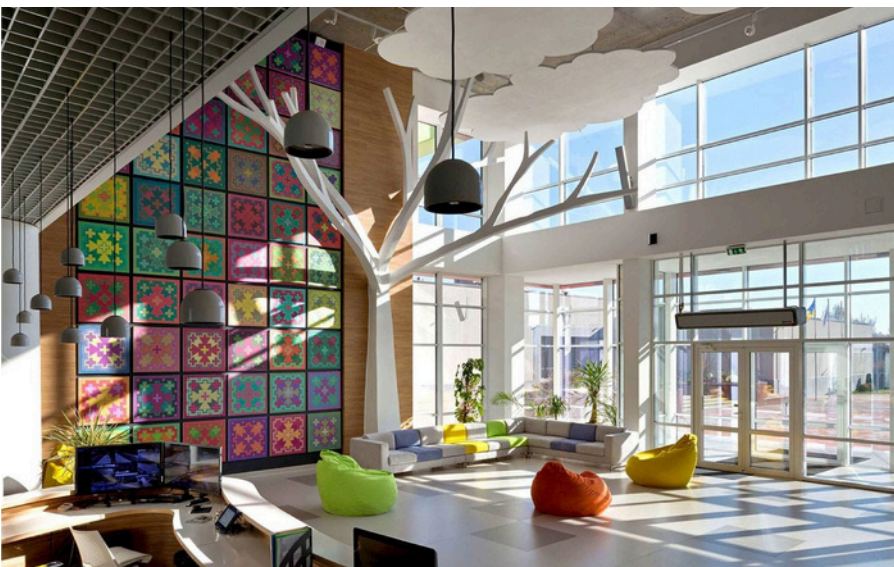
ARCHITECTURAL PRACTICE



Educational spaces should be inspiring spaces that support the learning process. Asaf Atelier designs modern, spacious and creative learning environments for school and university buildings, taking into account the needs of students and teachers. From classrooms to laboratories, libraries to social spaces, all spaces are planned with a balance of functionality and aesthetics.



Classrooms are designed in a flexible and modular structure to adapt to modern education methods. Ergonomic desks and chairs provide students with a comfortable learning environment, while in-class storage and digital educational tools support the learning process. In addition, classrooms with maximum use of natural light and acoustic arrangements increase students' concentration.



We design social spaces as places where students can relax, socialize and be inspired between classes or in their free time. We prioritize elements such as comfortable seating arrangements, student cafeterias, outdoor recreation areas and communal areas.

ENTERTAINMENT AND ART VENUES

Art galleries, theaters, concert halls and entertainment venues should offer visitors a unique experience. Asaf Atelier creates engaging and unforgettable spaces by meticulously planning every detail from acoustic arrangements to lighting designs. We bring creativity and aesthetics together by offering customized solutions for art and entertainment in every project.



Theater and performance halls should be specially designed spaces for both artists and audiences. Asaf Atelier offers ideal acoustic and visual solutions that strengthen the relationship between the stage and the audience in theater halls. Elements such as stage dimensions, seat layout, viewing angles and acoustic panels ensure that the audience has the best experience in every corner of the theater hall.





Initial Consultation and Needs Assessment

- Meet and get to know the client.
- Understand the client's expectations and goals for the project.
- Determine the purpose and use of the space.
- Discuss budget and timeline.
- Determine key design elements such as color palette, material selection, furniture and decorative elements.

Design / Concept / Project Development

- Detailed design of the concept.
- Preparation of technical drawings (3D, plans, sections, elevations).
- Selection and specification of materials.
- Creation of the lighting plan.



Workshop/Project Practice

- Production of furniture and all other material needs in our own workshop according to the selected concept/design, for which we make 3D modeling and production drawings.
- Starting the construction and monitoring its progress.
- Managing the delivery of materials and assembly.
- Ensuring quality control.
- Monitoring the progress of the project in terms of time and budget.



Completion and Decoration

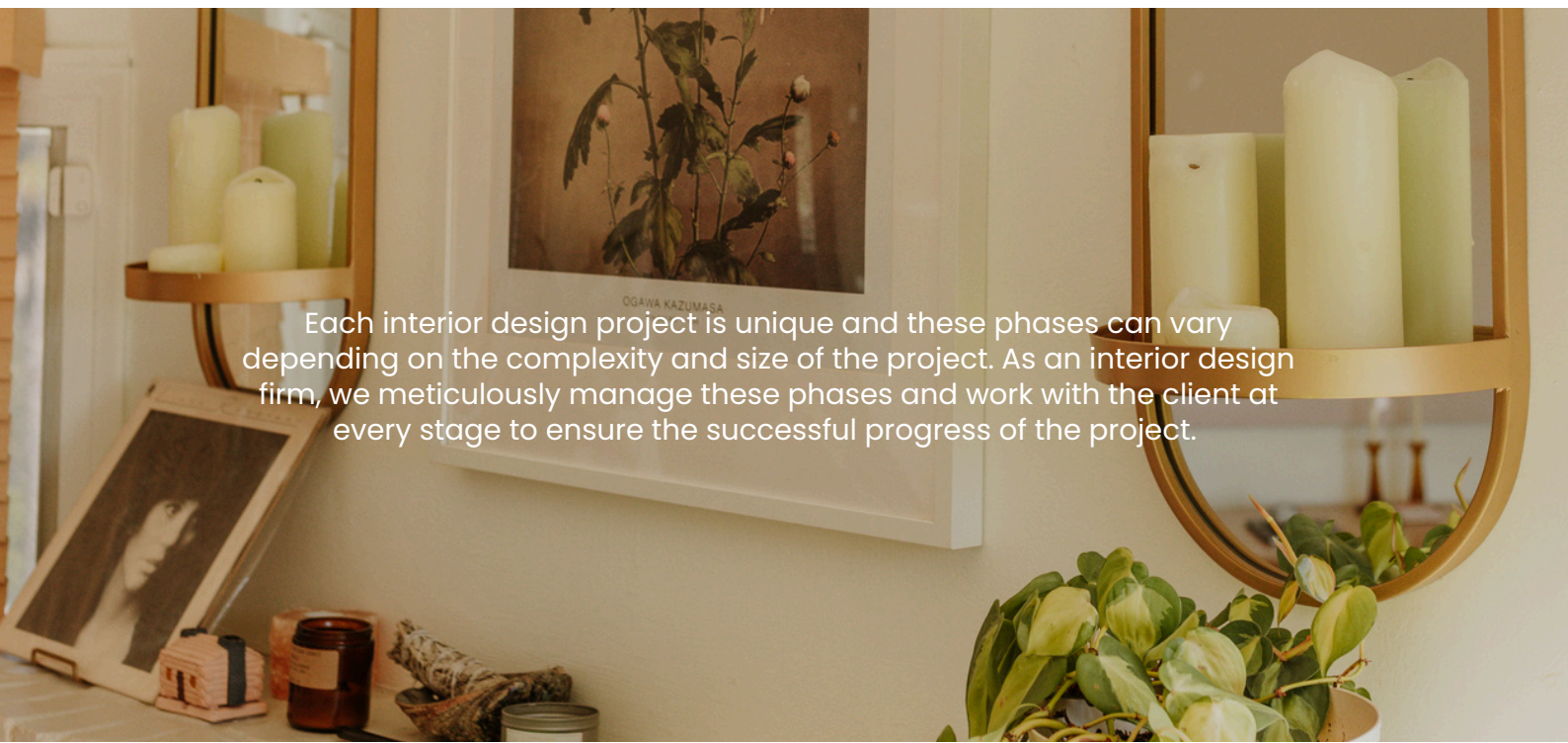
- Finishing the interior, placing furniture and decorative items.
- Add details such as lighting, textiles, artwork.
- Make the space ready for occupancy.

Submission and Final Evaluation

- Final follow-up visit with the client and evaluation of the final version of the project.
- Verification of customer satisfaction and compliance with project success criteria.
- Deliver the project documentation to the client (drawings, user manuals, etc.).



Each interior design project is unique and these phases can vary depending on the complexity and size of the project. As an interior design firm, we meticulously manage these phases and work with the client at every stage to ensure the successful progress of the project.



ASAF ATELIER

INTERIOR ARCHITECTURE

COMMUNICATION

www.asafatelier.com

[@asafateliericmimarlik](https://www.instagram.com/asafateliericmimarlik)

info@asafatelier.com

+90 532 421 08 87

Design Atelier

Showroom/Factory

Karsiyaka Mah. 676/1 Cad. 5/2

Golbasi / ANKARA

